

Eastmond Publishing Ltd (Autograph)

PO Box 46, Oundle, Peterborough, PE8 4JX, UK

Tel: +44 (0)1832 273444

Email: support@autograph-maths.com

Technical Support: +44 (0)151 630 4492

Fax: +44 (0)1832 273529

Web: www.autograph-maths.com

Autograph Network Installation

The Autograph installer is a standard Installer Package (.pkg file) and is designed to be installed using a managed network technology such as Apple Remote Desktop or other Network Management System. The instructions below assume installation using Apple Remote Desktop.

Types of Installation

This document explains how to install Autograph on a network using a shared licence. This type of installation is only suitable when all the client machines are connected to a network. For all other types of installation please refer to the separate “Autograph 3.3 Installation Guide”, which covers:

Teacher Computer at Home

If installing on a teacher’s computer that will be used at home.

Student Computer at Home

If installing on a student’s computer that will be used at home. (This is only available with the Extended School Site Licence.)

Single Computer at Institution (not on Network)

If installing on a school computer that will not always be connected to the network.

Installation Using Apple Remote Desktop

1. Select a computer list in the Remote Desktop window.
2. Select one or more computers in the selected computer list.
3. Choose Interact > Lock Screen, and then click Lock Screen.

By locking the screen, you prevent the package installation interface from appearing on the controlled computer’s screen during installation.

4. Choose Manage > Install Packages.
5. Select Autograph3.3.pkg from the CD or installation disk image (.dmg file).
Alternatively, you can drag the package on to the package list window.
6. Select whether to restart the target computers after installation. The Autograph Package has no requirement for a restart.

7. Select the option to run the task from “This application.”
8. Select other installation parameters, as desired.
9. Click Install.

During installation, a progress bar appears in the task header in the main window. No progress bars appear on the client computer. The copied package is deleted from the client computer if an error occurs during installation. However, a failed installation may leave behind other files created by the installer.

For further information, such as installing on offline computers, please refer to the section Installing Software Using Apple Remote Desktop and specifically the Installing Using the Install Packages Command sub-section in the Apple Remote Desktop Administrator Guide. This document can be found at the following location:

http://images.apple.com/remotedesktop/pdf/ARD_Admin_Guide_v3.3.pdf

Setting up the licence file

In order to use Autograph beyond the 30-day trial period, a valid licence file must be copied to the server and activated. The licence file is named Autograph3.3.10.lic and can be found on the CD or installation disk image. It should be copied to a shared location on the server and client machines should have read/write access to the file.

The client machines should then be configured so that Autograph can find the licence file on the server at runtime. The location of the licence file is specified in the Autograph Preferences file com.autograph-maths.autograph.plist via the LicenceFilePath key. There are many ways to edit Preference files but a command line method is given below:

1. Open Terminal application on the server.
2. Enter the following sequence of commands:

```
defaults delete com.autograph-maths.autograph_temp
defaults write com.autograph-maths.autograph_temp LicenceFilePath <Path to
Autograph3.3.10.lic folder>
sudo mv ~/Library/Preferences/com.autograph-maths.autograph_temp.plist
/Library/Preferences/com.autograph-maths.autograph.plist
```

<Path to Autograph3.3.10.lic folder> should be the full path to the shared folder in which you have placed the Autograph3.3.10.lic licence file as mentioned previously, e.g. /Network/Shared/Licences/Autograph. You may see a “not found” message after the first command. This can be safely ignored.

3. Copy the resulting Preferences file `com.autograph-maths.autograph.plist` in `/Library/Preferences` to a location that will be read by Autograph on the client machines. If the network is configured so the workstations have a `/Network` folder mounted, the file can be placed in `/Network/Library/Preferences`. Otherwise the file will need copying to `/Library/Preferences` on each workstation. This can be achieved using the Copy Items Command in Apple Remote Desktop.

Activating Autograph

It is now necessary to activate Autograph for your network. This should be performed on one of the client workstations that you have previously installed to.

1. Open Autograph on a client workstation. The Activate or Trial Autograph dialog will open, as in Figure 1.

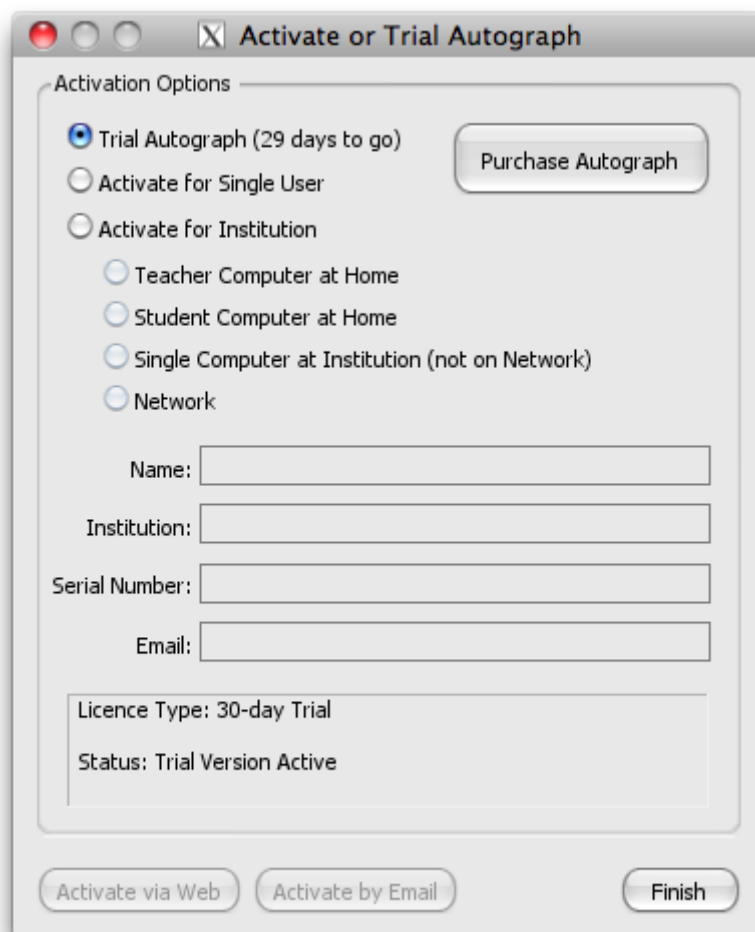


Figure 1. Activate or Trial Autograph

2. Select Activate for Institution and then Network. Enter your Name, Institution, Serial Number and Email (see Figure 2). Click Activate via Web. The computer must be connected to the internet for this to be successful.

The image shows a software dialog box titled "Activate or Trial Autograph". It contains several sections:

- Activation Options:** A group of radio buttons for selecting the activation method. The "Activate for Institution" option is selected, and within it, the "Network" sub-option is also selected.
- Purchase Autograph:** A button located to the right of the "Activate for Institution" radio button.
- Form Fields:** Four text input fields containing the following information:
 - Name: George Osborne
 - Institution: Inner City Comprehensive
 - Serial Number: x78j9-6a2df-48I8d-6XOzE-CxCCJ-6a3DF
 - Email: george@osborne.org
- Summary:** A text area at the bottom of the form fields showing:
 - Licence Type: 30-day Trial
 - Status: Trial Version Active
- Buttons:** Three buttons at the bottom of the dialog: "Activate via Web", "Activate by Email", and "Finish".

Figure 2. Entering licence details

3. If you are using a proxy server for internet access, click Proxy settings and enter the relevant details. Click the Activate now button.

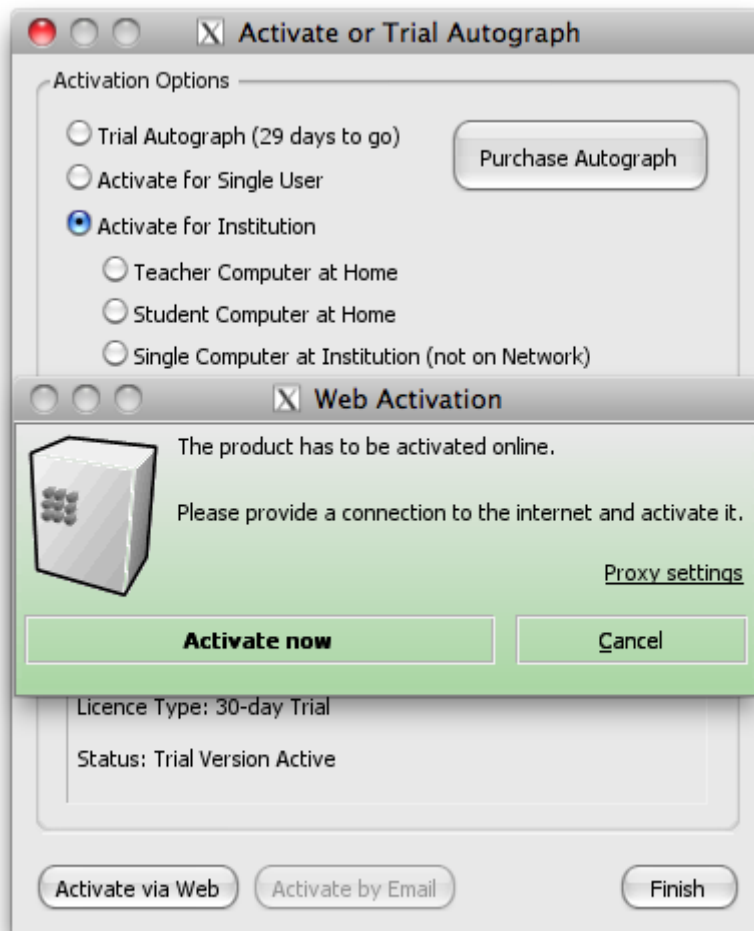


Figure 3. Web Activation

4. The Activation Progress dialog will appear for a few seconds.

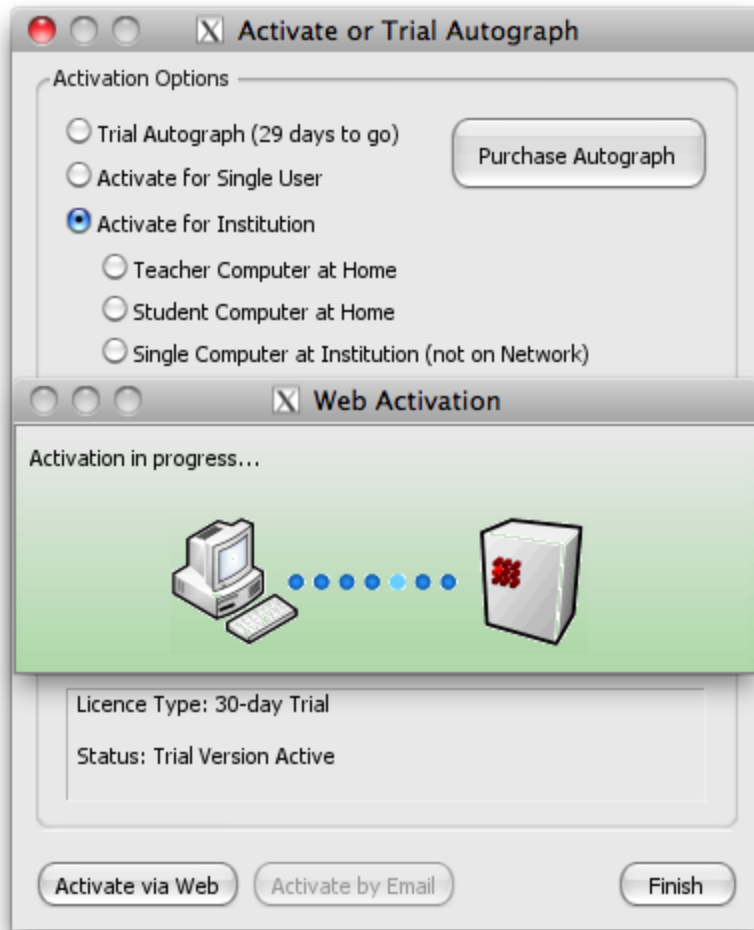


Figure 4. Activation in progress...

5. When the activation succeeds you will see the Online Activation was successful dialog. Click Close and then Finish and you will have completed the installation of Autograph. If the activation was not successful check your internet connection and try again.

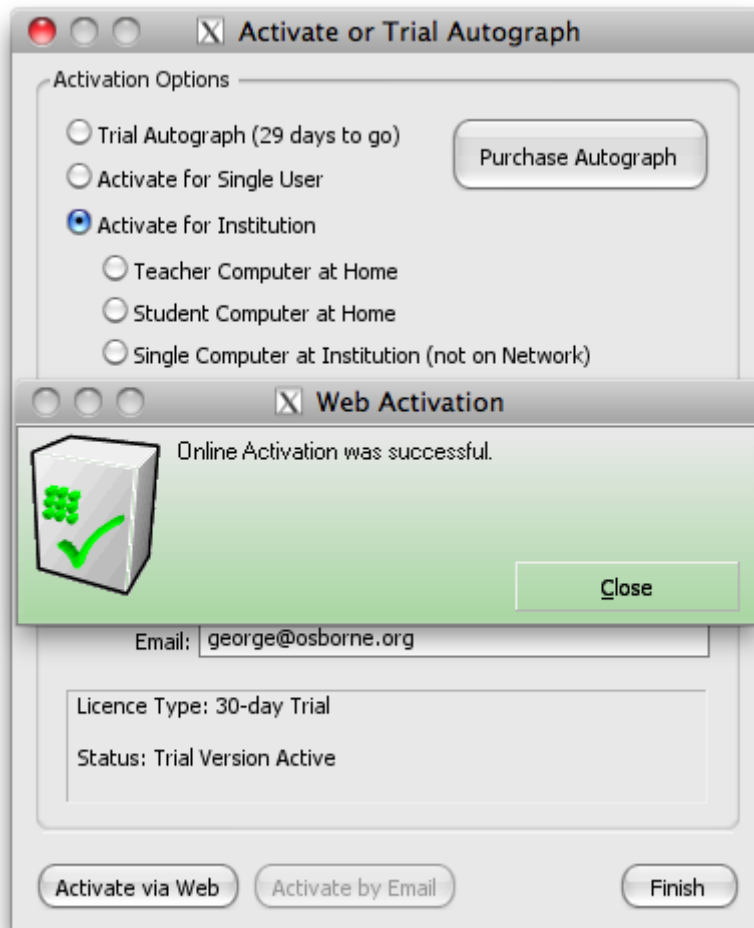


Figure 5. Online Activation was successful

6. Autograph is now activated and should run as normal. This process should activate for all workstations on the network that have Autograph installed.